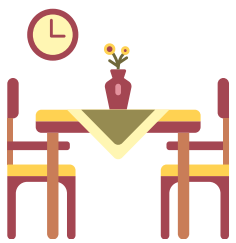


OCT 5 MDHHS EPIDEMIC ORDER

Limits on attendance at residential gatherings.



INDOORS: UP TO 10 PERSONS
OUTDOORS: UP TO 100 PERSONS

- Indoor gatherings of up to 10 persons occurring at a residence are permitted (face coverings are strongly recommended for such gatherings);
- Outdoor gatherings of up to 100 persons occurring at a residence are permitted (face coverings are recommended for such gatherings);

Limits on attendance at non-residential venues.

INDOORS



- Indoor gatherings of up to 10 persons occurring at a non-residential venue are permitted provided each person at the gathering wears a face covering;
- Indoor gatherings of more than 10 and up to 500 people occurring at a nonresidential venue are permitted only to the extent that the organizers and venue:
 - FOR FIXED SEATING: limit attendance to 20% of seating capacity of the venue
 - WITHOUT FIXED SEATING: limit attendance to 20 persons per 1,000 square feet in each occupied room
 - Require that each person gathered wear a face covering

OUTDOORS



- Outdoor gatherings of up to 100 persons occurring at a non-residential venue are permitted provided that each person at the gathering wears a face covering;
- Outdoor gatherings of more than 100 and up to 1,000 persons occurring at a nonresidential venue with fixed seating are permitted only to the extent that the organizers and venue:
 - FOR FIXED SEATING: limit attendance to 30% of seating capacity;
 - WITHOUT FIXED SEATING: limit attendance to 30 persons per 1,000 square feet, including within any distinct area within the event space;
 - Require that each person gathered wear a face covering

“Gathering” means any occurrence where persons from multiple households are present in a shared space in a group of two or more. All gatherings must include 6 feet of social distance between households.

Facial coverings are still required.



Businesses, government offices, schools, and other operations must not allow indoor gatherings of any kind unless they require individuals to wear a face covering.

These entities may not assume that someone who enters the business without a face covering falls in one of the exceptions; but may accept an individual’s verbal representation that they are not wearing a face covering because they fall within a specified exception.

Exceptions to face coverings include < 5 years old, cannot medically tolerate, are eating/drinking at food service est., exercising outdoors, swimming, removing temporarily to receive service or for identification, communicating with deaf/HOH, engaged in public safety role, voting, officiating/engaging in a religious service, giving speech to broadcast or audience.

Food Service Establishments

INDOOR COMMON AREAS AND SEATING

- Close indoor common areas in which people can congregate, dance, or otherwise mingle.
- Prohibit indoor gatherings anywhere alcoholic beverages are sold for consumption onsite, except for where parties are seated and separated from one another by at least six feet, and do not intermingle

Organized Sports

FACE COVERINGS AND DISTANCE

- Face coverings and six feet of distance required for participants (except swimming)
- Live audience limits (2 per player or following limits above)
- No concession sales
- Follow additional guidance from MDHHS

Implementation and Enforcement

- Pursuant to MCL 333.2235(1), local health departments are authorized to carry out and enforce the terms of this order.
- Law enforcement officers are specifically authorized to investigate potential violations of this order. They may coordinate as necessary with the appropriate regulatory entity and enforce this order within their jurisdiction.

