

Coronavirus (COVID-19) Data Report for Eaton County, MI

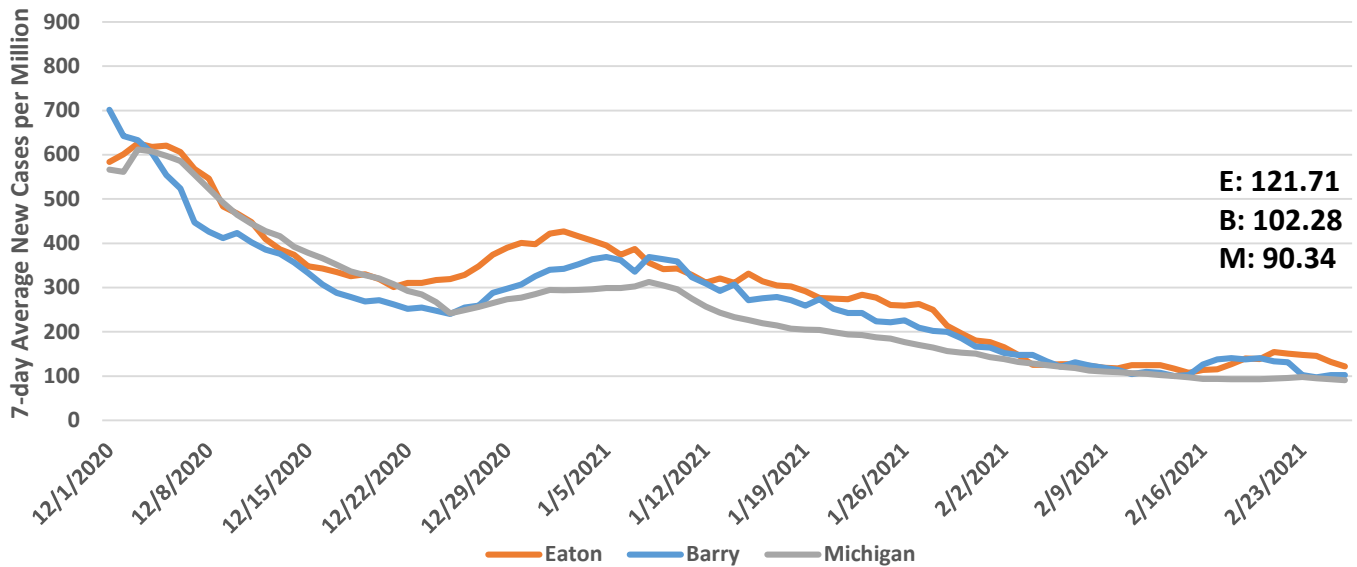
Report Date: 03/02/2021

This report contains preliminary data on persons testing positive for COVID-19. It may be revised as new information is gathered during case investigation. The health department plans to update this data report weekly each Tuesday. A similar report is prepared and released for Barry County, MI each Monday.

Summary Data

Total Cases: 5703 Recovered Cases: 5448 Active Cases: 104 Deaths: 151 In Quarantine: 264 Probable Cases: 625

7-day Average of New Confirmed and Probable Cases, Rate per 1m

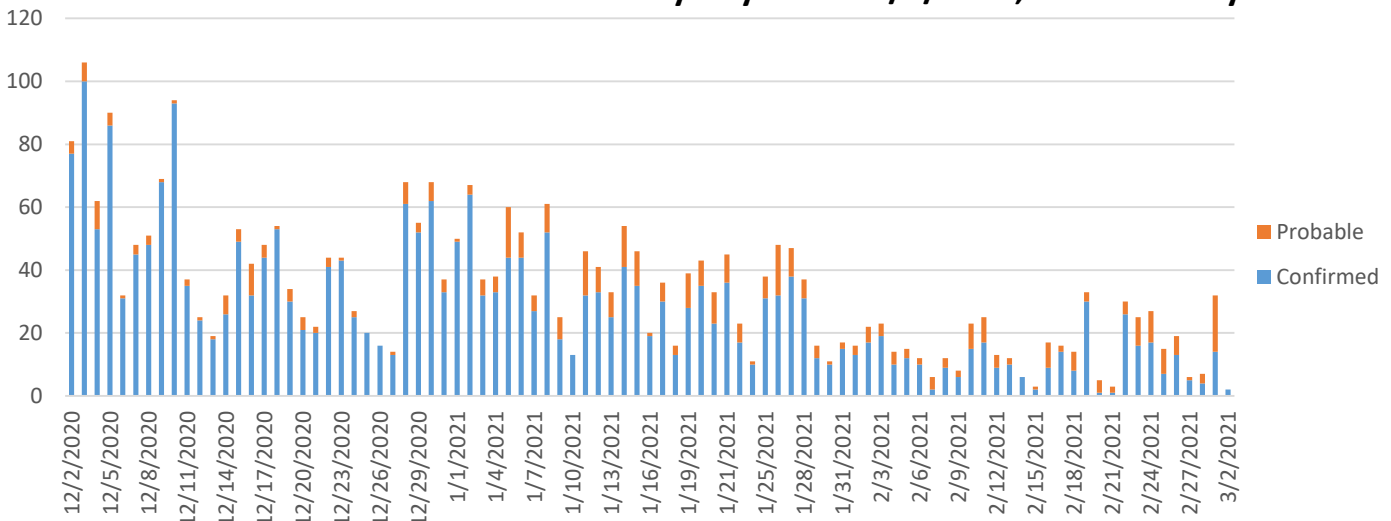


Source: Michigan Disease Surveillance System & Outbreak Management System (MDSS)

Active Cases = Total Cases – Deaths – Recovered Cases

For data on probable cases, visit Michigan's COVID-19 Data Website, at https://www.michigan.gov/coronavirus/0,9753,7-406-98163_98173---,00.html

Confirmed and Probable Cases by Day since 12/1/2020, Eaton County



Race	Cases	% Cases	% Pop	Deaths	Death Rate
White	4250	74.5%	87.50%	118	2.8%
Black or African American	433	7.6%	7.00%	15	3.5%
Asian	131	2.3%	2.50%	1	0.8%
Unknown/Other	889	15.6%	3.00%	17	1.9%

Ethnicity	Cases	% Cases	% Pop	Deaths	Death Rate
Hispanic/Latino	336	5.9%	5.50%	6	1.8%
Arab	25	0.4%	*	2	8.0%

*Data not available

Eaton County Breakdown by Age Data as of 03/02/2021				
Age Group	# Cases	% Cases	# Deaths	Death Rate
Cases 0-9	157	2.8%	0	0.0%
Cases 10-19	550	9.6%	0	0.0%
Cases 20-29	996	17.5%	1	0.1%
Cases 30-39	790	13.9%	0	0.0%
Cases 40-49	814	14.3%	2	0.2%
Cases 50-59	901	15.8%	8	0.9%
Cases 60-69	716	12.6%	26	3.6%
Cases 70-79	453	7.9%	40	8.8%
Cases 80+	326	5.7%	74	22.7%

Race and ethnicity are asked as separate questions on the disease investigation forms.

Persons who identify as Hispanic/Latino or Arab can identify as any race.

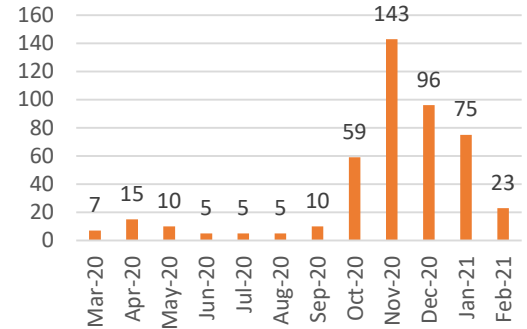
Hospitalization Data

Inpatient: 453 (7.2%)

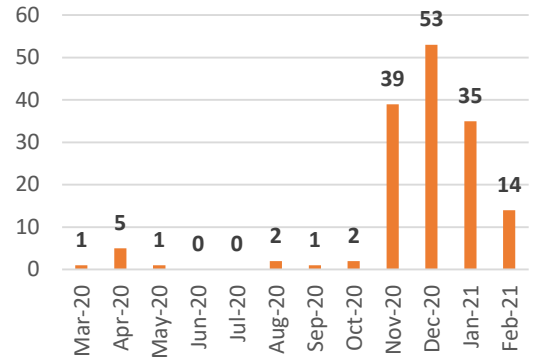
Died: 151 (2.4%)

Not Hospitalized: 5731 (90.5%)

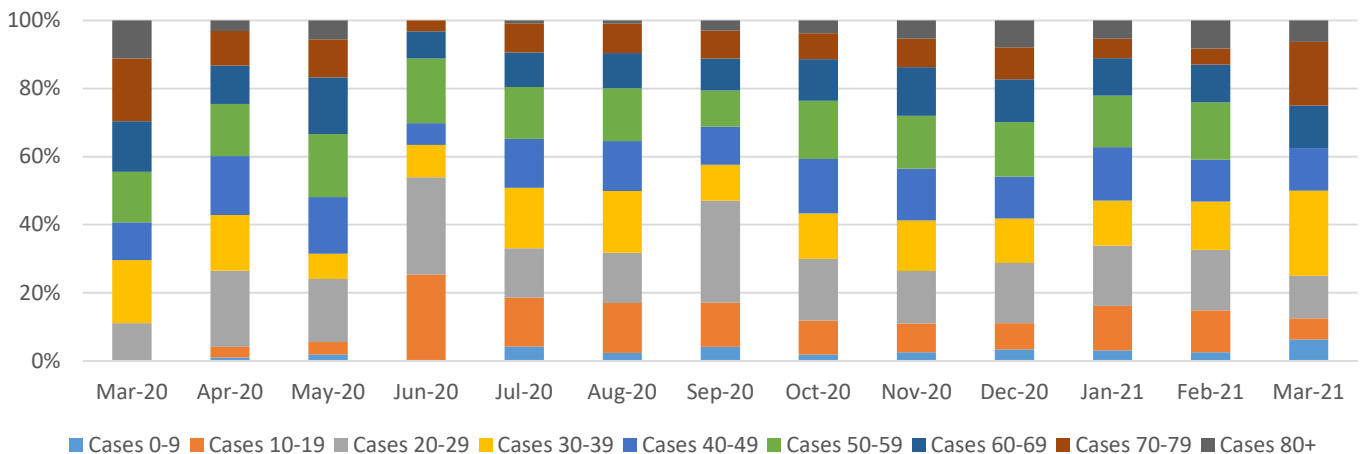
Eaton County Hospitalizations by Month



Deaths by Month, Eaton County



Eaton Percentage of COVID-19 Cases by Age Group, Each Month

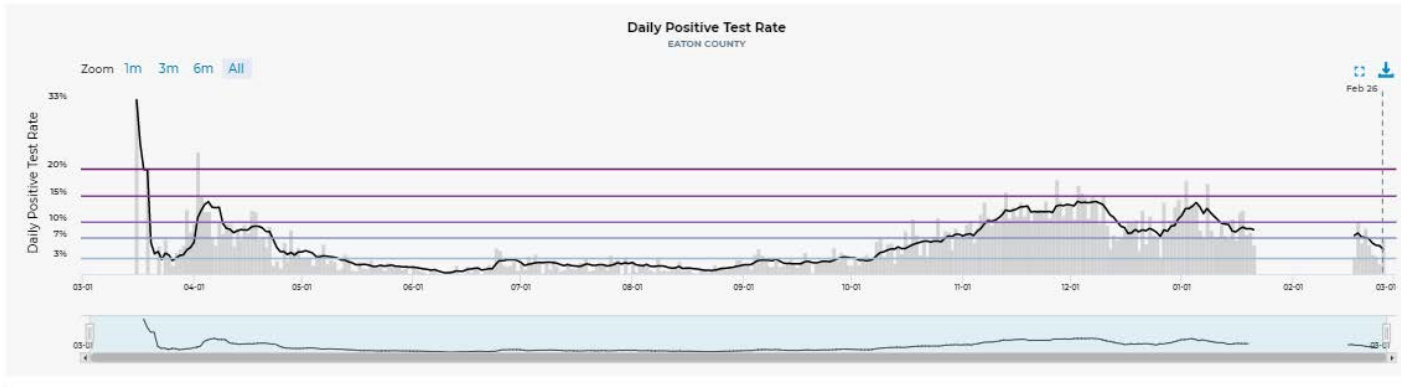


Testing Capacity and Positivity Rate - MiStartMap

Test Results

4.8%
positive tests *

303.5
daily tests
administered *



Test Thresholds
Percent Positive

Low: <3%

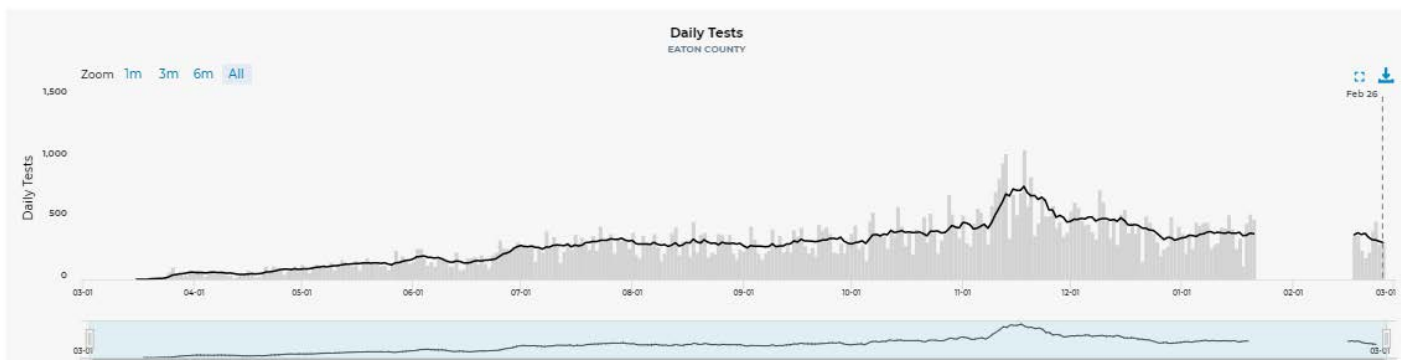
A: 3-7%

B: 7-10%

C: 10-15%

D: 15-20%

E: >=20%



*Missing data is not explained on MiStartMap.info