

## Coronavirus (COVID-19) Data Report for Eaton County, MI

Report Date: 01/11/2022

This report contains preliminary data on persons testing positive for COVID-19. It may be revised as new information is gathered during case investigation. The health department plans to update this data report weekly each Tuesday.

### Summary of Case Data

Total Cases: 17,518    Recovered Cases: 14,755  
Deaths: 317    Probable Cases: 3,193  
7-Day Total New Cases: 1238

### Hospitalization Data

Inpatient: 1,264 (7.2%)  
Died: 317 (1.8%)  
Not Hospitalized: 15,937 (90.4%)

### Positivity Rate

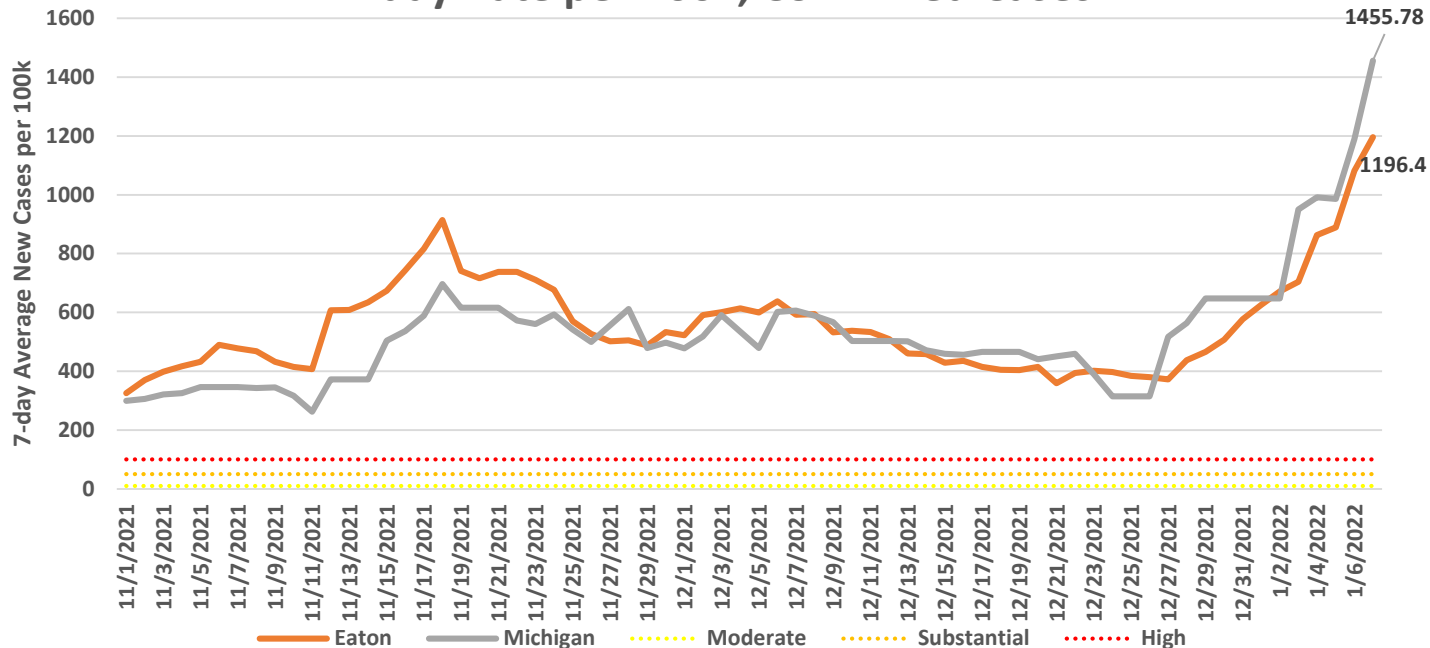
32.3%

**CDC Community Transmission Level: High**

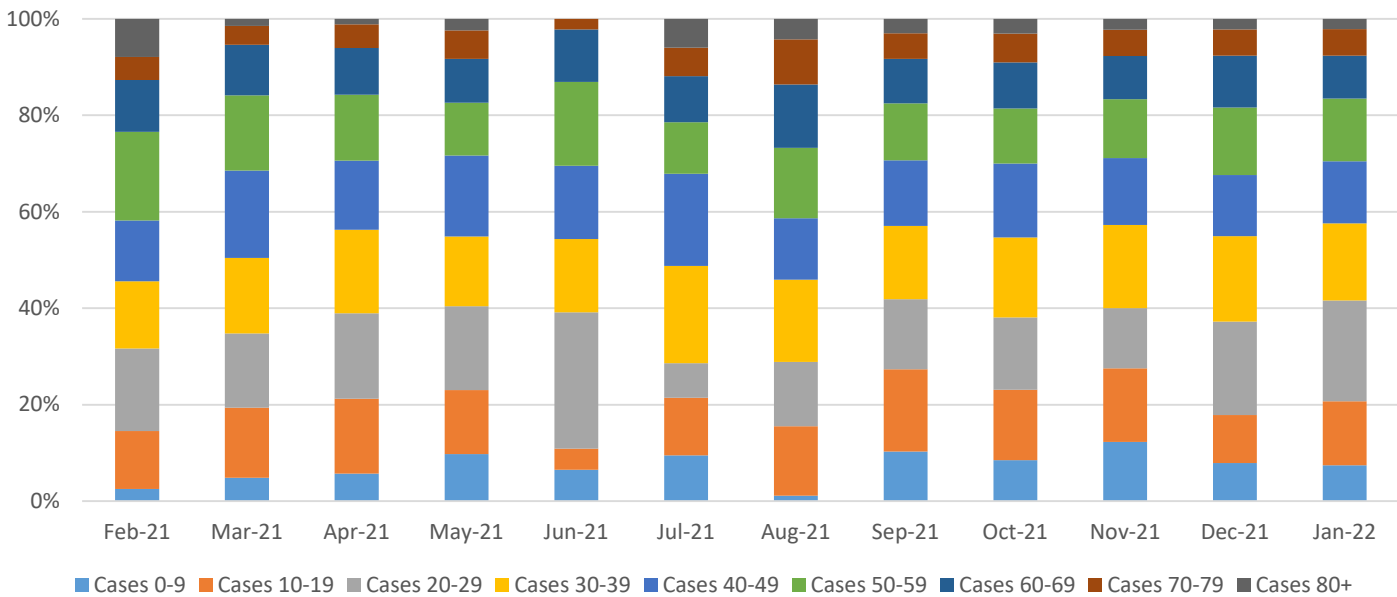
CDC Transmission Levels	Case Rate per 100k for this level	Positivity Rate for this level	Eaton's Case Rate per 100k	Eaton's Positivity Rate
Low (Blue)	0-9.99	0-4.99%		
Moderate (Yellow)	10-49.99	5-7.99%		
Substantial (Orange)	50-99.9	8-9.99%		
High (Red)	>100	>10.0%	<b>1196.4 per 100k</b>	<b>32.3%</b>

CDC's Level of Community Transmission is based on the number of cases in the last 7 days per 100,000 population and the number of tests in the last 7 days that have a positive result. If either measure is in a higher risk category, that risk level is used for the County. [Visit this website](#) to learn more about the CDC Transmission Risk Levels.

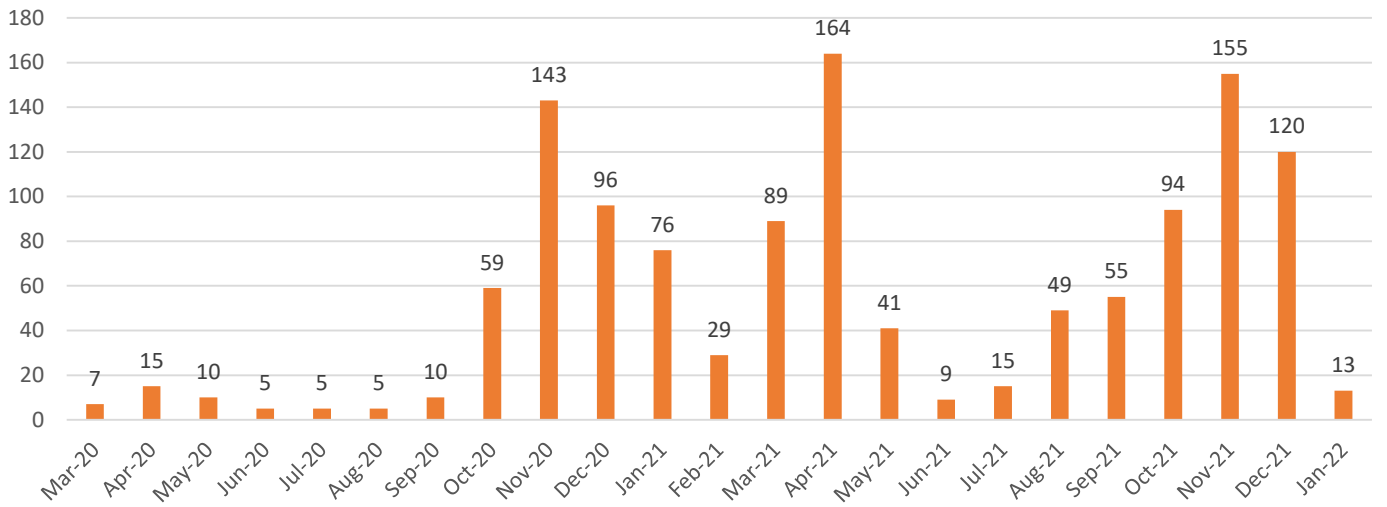
### 7-day Rate per 100k, Confirmed Cases



## Eaton Percentage of COVID-19 Cases by Age Group, Each Month



## Eaton County Hospitalizations by Month



## Deaths by Month, Eaton County

