

# Coronavirus (COVID-19) Data Report for Barry County, MI

Report Date: 05/03/2021

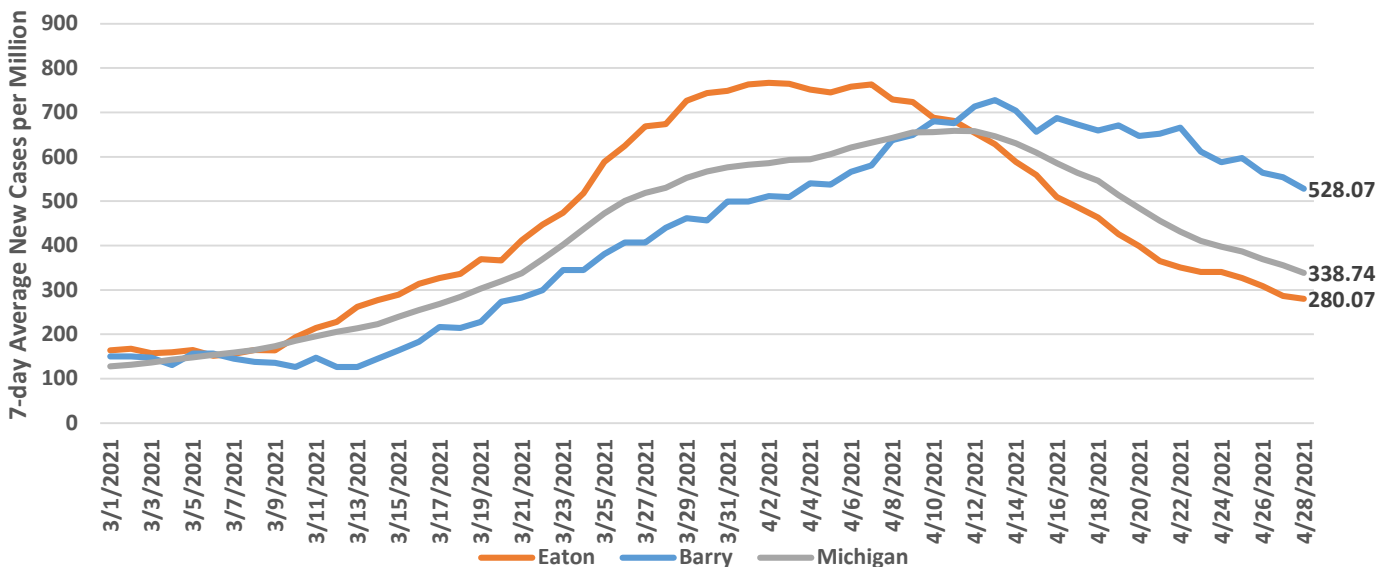
This report contains preliminary data on persons testing positive for COVID-19. It may be revised as new information is gathered during case investigation. The health department plans to update this data report weekly each Tuesday. A similar report is prepared and released for Eaton County, MI each Tuesday.

### Summary of Case Data

**Total Cases: 4962 Recovered Cases: 3945 7-Day Total New Confirmed Cases: 132**

**Deaths: 62 In Quarantine: 644 Probable Cases: 530**

### 7-day Average of New Confirmed and Probable Cases, Rate per 1m

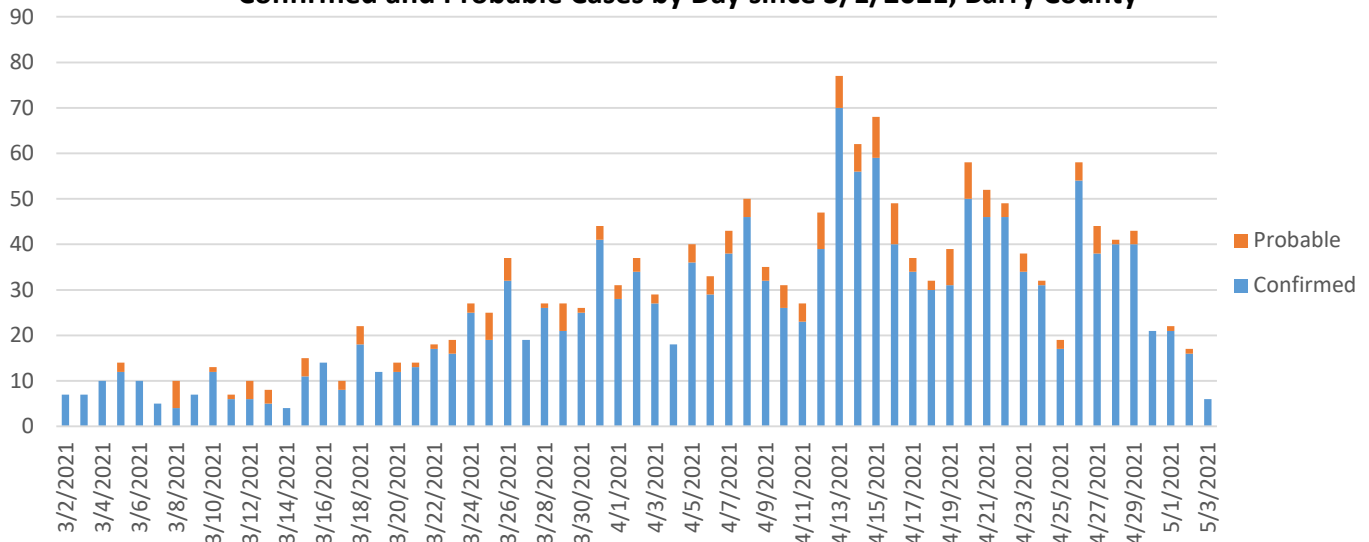


Source: Michigan Disease Surveillance System & Outbreak Management System (MDSS)

Active Cases = Total Cases – Deaths – Recovered Cases

For data on probable cases, visit Michigan's COVID-19 Data Website, at [https://www.michigan.gov/coronavirus/0,9753,7-406-98163\\_98173---,00.html](https://www.michigan.gov/coronavirus/0,9753,7-406-98163_98173---,00.html)

### Confirmed and Probable Cases by Day since 3/1/2021, Barry County



Race	Cases	% Cases	% Pop	Deaths	Death Rate
White	4376	88.2%	87.50%	62	1.4%
Black or African American	43	0.9%	7.00%	0	0.0%
Asian	17	0.3%	2.50%	0	0.0%
Unknown/Other	524	10.6%	3.00%	0	0.0%

Ethnicity	Cases	% Cases	% Pop	Deaths	Death Rate
Hispanic/Latino	153	3.1%	2.85%	0	0.0%
Arab	4	0.1%	*	0	0.0%

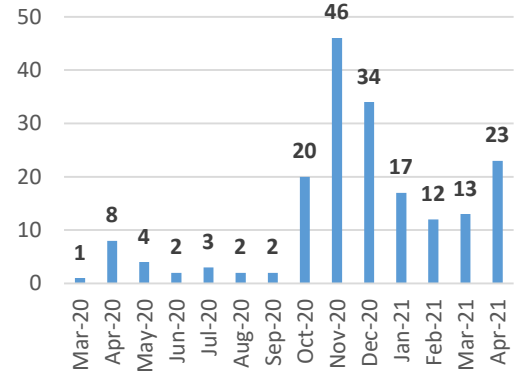
Race and ethnicity are asked as separate questions on the disease investigation forms.

Persons who identify as Hispanic/Latino or Arab can identify as any race.

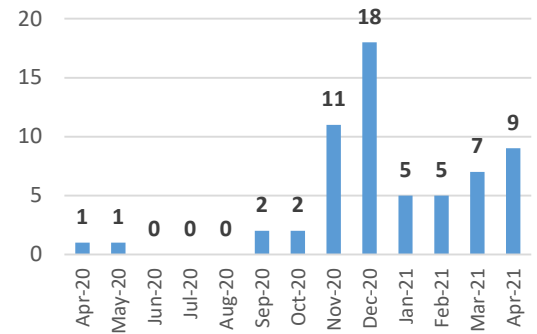
### Hospitalization Data

**Inpatient:** 187 (3.8%)  
**Died:** 62 (1.2%)  
**Not Hospitalized:** 4713 (95.0%)

### Hospitalizations by Month, Barry County



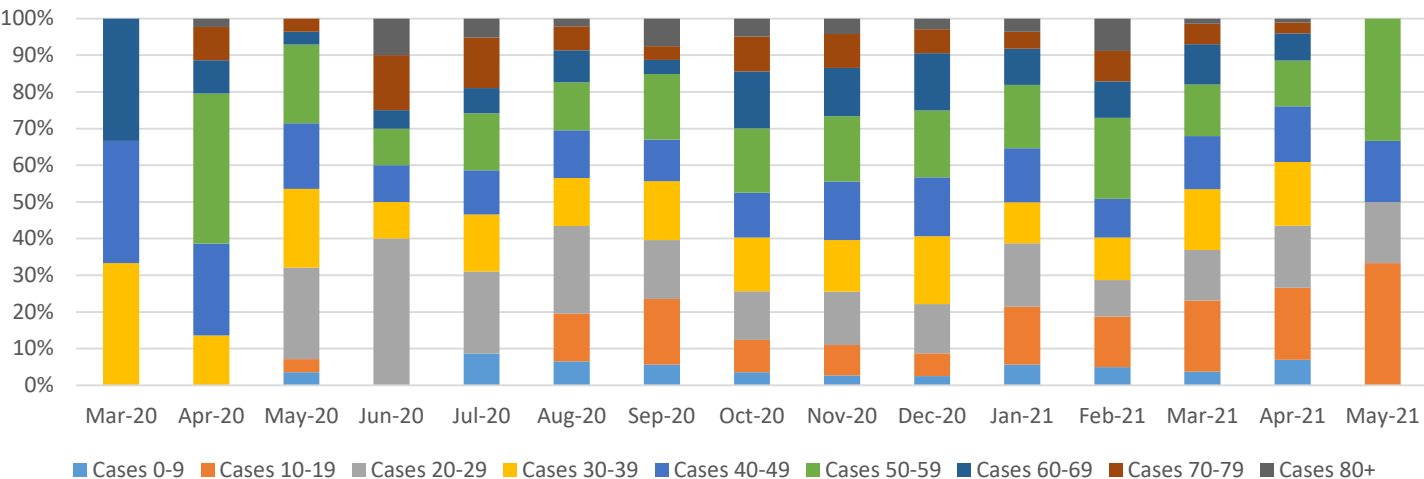
### Barry County Deaths by Month



\*Data not available

Barry County Breakdown by Age Data as of 05/03/2021				
Age Group	# Cases	% Cases	# Deaths	Death Rate
Cases 0-9	214	4.3%	0	0.0%
Cases 10-19	619	12.5%	0	0.0%
Cases 20-29	751	15.1%	1	0.1%
Cases 30-39	765	15.4%	0	0.0%
Cases 40-49	743	15.0%	0	0.0%
Cases 50-59	811	16.3%	7	0.9%
Cases 60-69	567	11.4%	8	1.4%
Cases 70-79	327	6.6%	25	7.6%
Cases 80+	165	3.3%	21	12.7%

### Barry County - Percentage of COVID-19 Cases by Age Group by Month

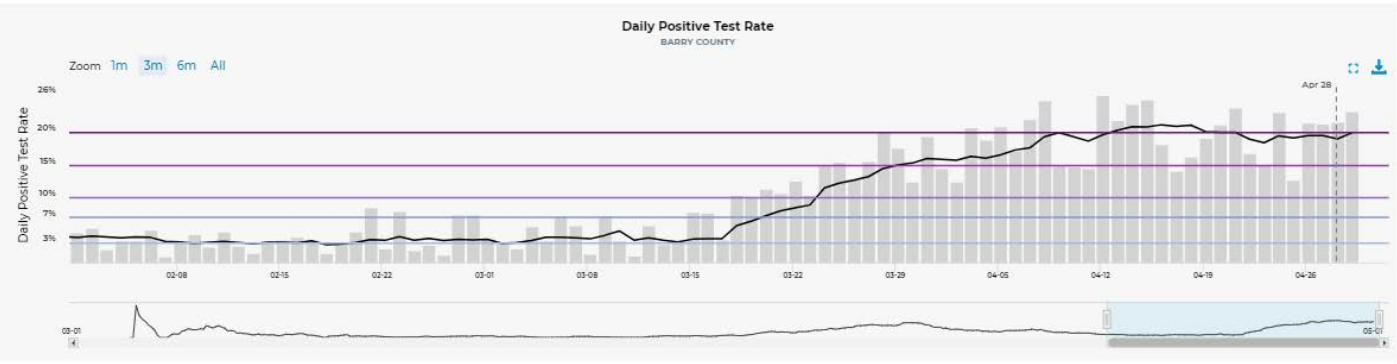


# Testing Capacity and Positivity Rate - MiStartMap

Test Results

19%  
positive tests

199.2  
daily tests  
administered



### Risk Thresholds (% Positive)

