

# Coronavirus (COVID-19) Data Report for Barry County, MI

Report Date: 05/03/2021

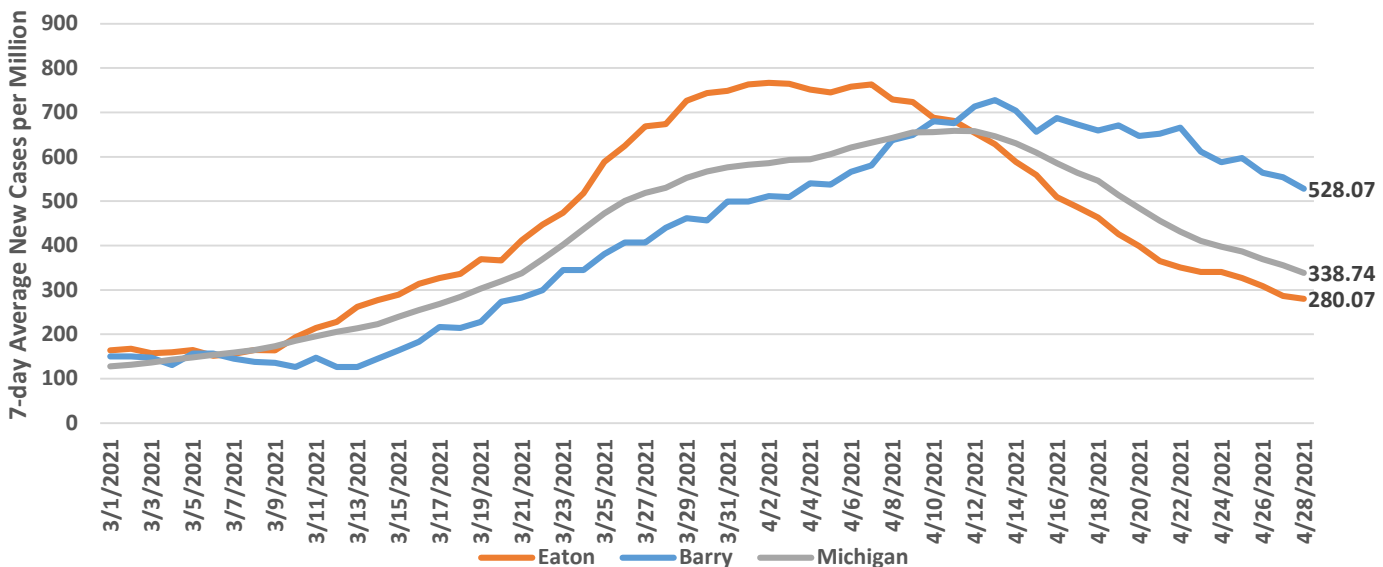
This report contains preliminary data on persons testing positive for COVID-19. It may be revised as new information is gathered during case investigation. The health department plans to update this data report weekly each Tuesday. A similar report is prepared and released for Eaton County, MI each Tuesday.

### Summary of Case Data

**Total Cases: 4962 Recovered Cases: 3945 7-Day Total New Confirmed Cases: 132**

**Deaths: 62 In Quarantine: 644 Probable Cases: 530**

### 7-day Average of New Confirmed and Probable Cases, Rate per 1m

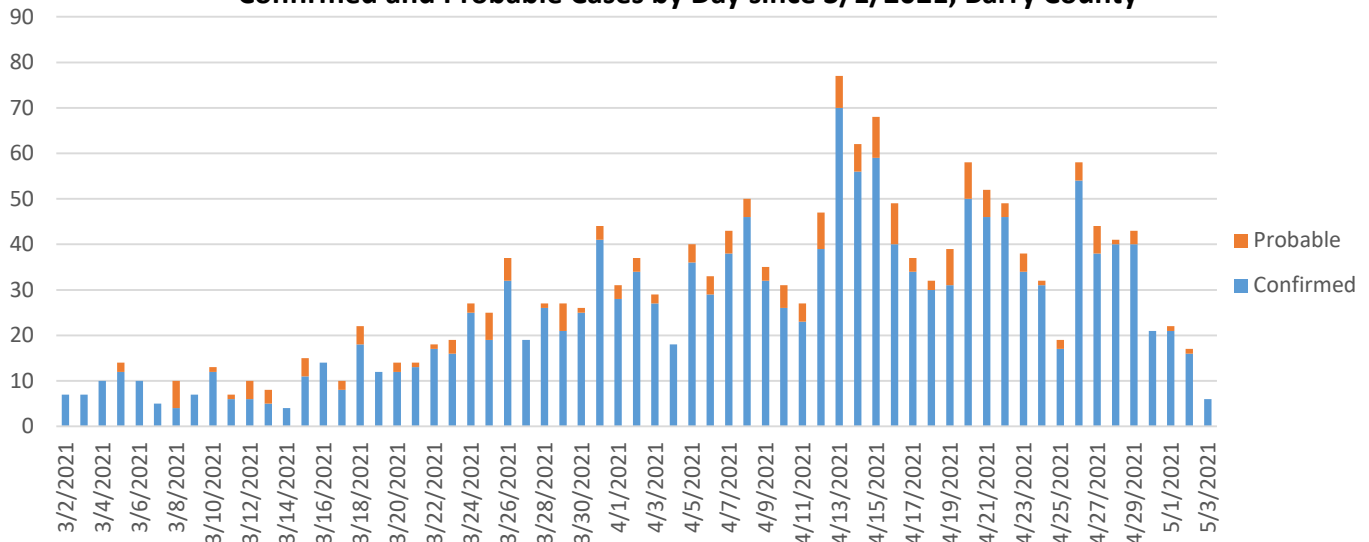


Source: Michigan Disease Surveillance System & Outbreak Management System (MDSS)

Active Cases = Total Cases – Deaths – Recovered Cases

For data on probable cases, visit Michigan's COVID-19 Data Website, at [https://www.michigan.gov/coronavirus/0,9753,7-406-98163\\_98173---,00.html](https://www.michigan.gov/coronavirus/0,9753,7-406-98163_98173---,00.html)

### Confirmed and Probable Cases by Day since 3/1/2021, Barry County



| Race                      | Cases | % Cases | % Pop  | Deaths | Death Rate |
|---------------------------|-------|---------|--------|--------|------------|
| White                     | 4376  | 88.2%   | 87.50% | 62     | 1.4%       |
| Black or African American | 43    | 0.9%    | 7.00%  | 0      | 0.0%       |
| Asian                     | 17    | 0.3%    | 2.50%  | 0      | 0.0%       |
| Unknown/Other             | 524   | 10.6%   | 3.00%  | 0      | 0.0%       |

| Ethnicity       | Cases | % Cases | % Pop | Deaths | Death Rate |
|-----------------|-------|---------|-------|--------|------------|
| Hispanic/Latino | 153   | 3.1%    | 2.85% | 0      | 0.0%       |
| Arab            | 4     | 0.1%    | *     | 0      | 0.0%       |

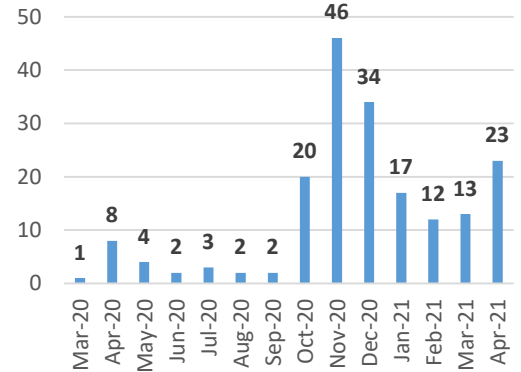
Race and ethnicity are asked as separate questions on the disease investigation forms.

Persons who identify as Hispanic/Latino or Arab can identify as any race.

### Hospitalization Data

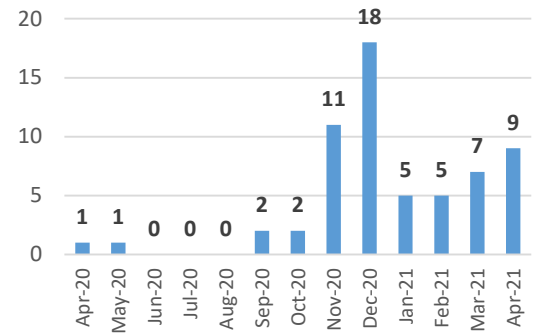
**Inpatient:** 187 (3.8%)  
**Died:** 62 (1.2%)  
**Not Hospitalized:** 4713 (95.0%)

### Hospitalizations by Month, Barry County



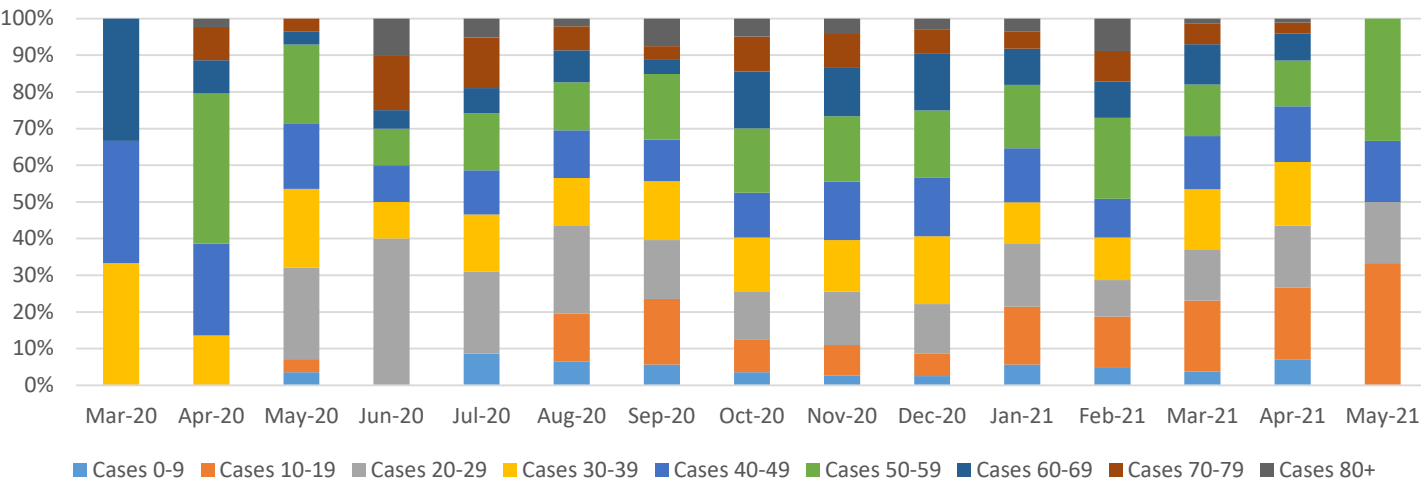
\*Data not available

### Barry County Deaths by Month



| Barry County Breakdown by Age Data as of 05/03/2021 |         |         |          |            |
|---|---------|---------|----------|------------|
| Age Group   | # Cases | % Cases | # Deaths | Death Rate |
| Cases 0-9   | 214     | 4.3%    | 0        | 0.0%       |
| Cases 10-19   | 619     | 12.5%   | 0        | 0.0%       |
| Cases 20-29   | 751     | 15.1%   | 1        | 0.1%       |
| Cases 30-39   | 765     | 15.4%   | 0        | 0.0%       |
| Cases 40-49   | 743     | 15.0%   | 0        | 0.0%       |
| Cases 50-59   | 811     | 16.3%   | 7        | 0.9%       |
| Cases 60-69   | 567     | 11.4%   | 8        | 1.4%       |
| Cases 70-79   | 327     | 6.6%    | 25       | 7.6%       |
| Cases 80+   | 165     | 3.3%    | 21       | 12.7%      |

### Barry County - Percentage of COVID-19 Cases by Age Group by Month

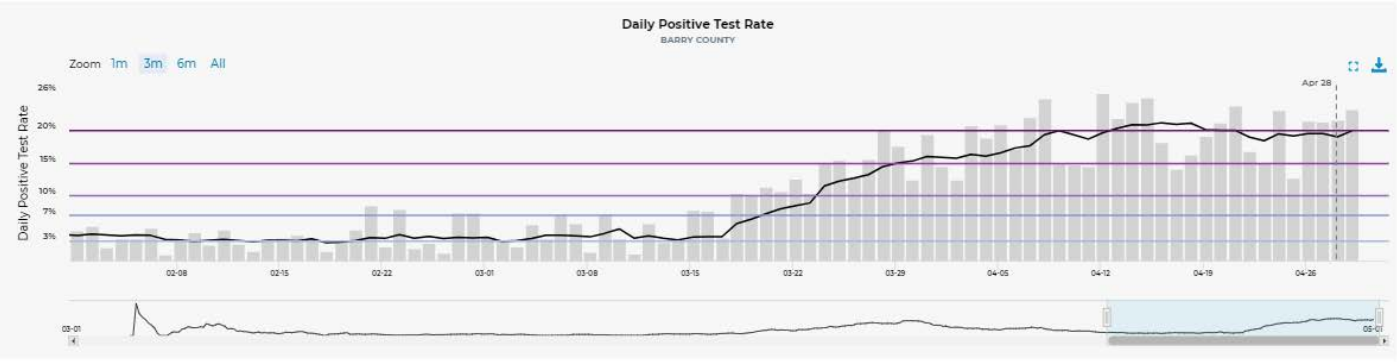


# Testing Capacity and Positivity Rate - MiStartMap

Test Results

19%  
positive tests

199.2  
daily tests  
administered



### Risk Thresholds (% Positive)

