

Coronavirus (COVID-19) Data Report for Barry County, MI

Report Date: 01/11/2022

This report contains preliminary data on persons testing positive for COVID-19. It may be revised as new information is gathered during case investigation. The health department plans to update this data report weekly each Tuesday.

Summary of Case Data

Total Cases: 9,742 Recovered Cases: 8,682
Deaths: 134 Probable Cases: 1,803
7-Day Total New Cases: 395

Hospitalization Data

Inpatient: 396 (4.1%)
Died: 134 (1.4%)
Not Hospitalized: 9,212 (94.4%)

Positivity Rate

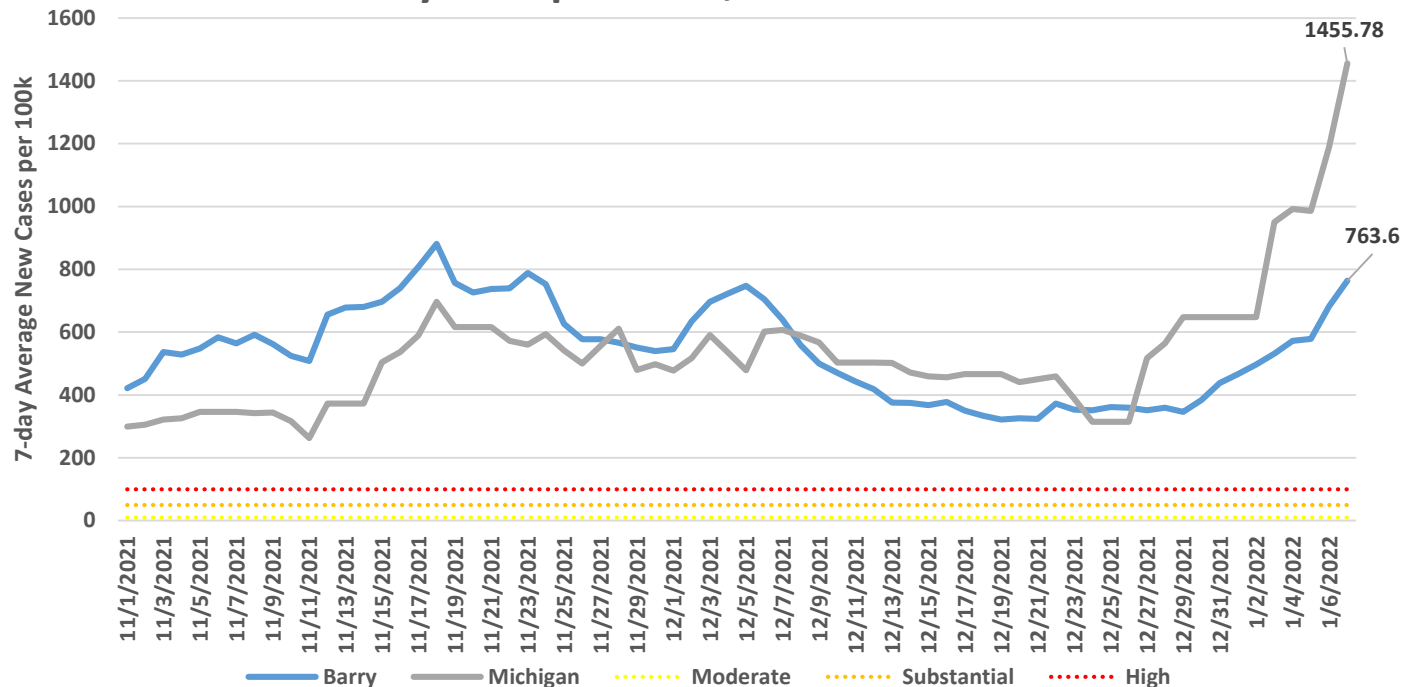
32%

CDC Community Transmission Level: High

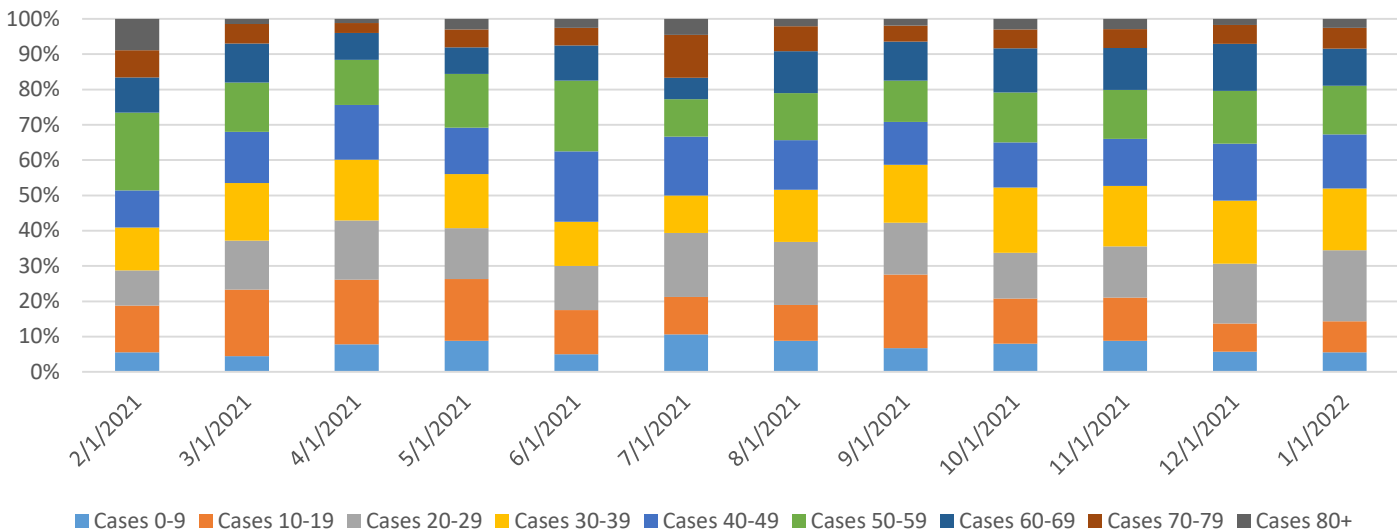
CDC Transmission Levels	Case Rate per 100k for this level	Positivity Rate for this level	Barry's Case Rate per 100k	Barry's Positivity Rate
Low (Blue)	0-9.99	0-4.99%		
Moderate (Yellow)	10-49.99	5-7.99%		
Substantial (Orange)	50-99.9	8-9.99%		
High (Red)	>100	>10.0%	763.6 per 100k	32%

CDC's Level of Community Transmission is based on the number of cases in the last 7 days per 100,000 population and the number of tests in the last 7 days that have a positive result. If either measure is in a higher risk category, that risk level is used for the County. [Visit this website](#) to learn more about the CDC Transmission Risk Levels.

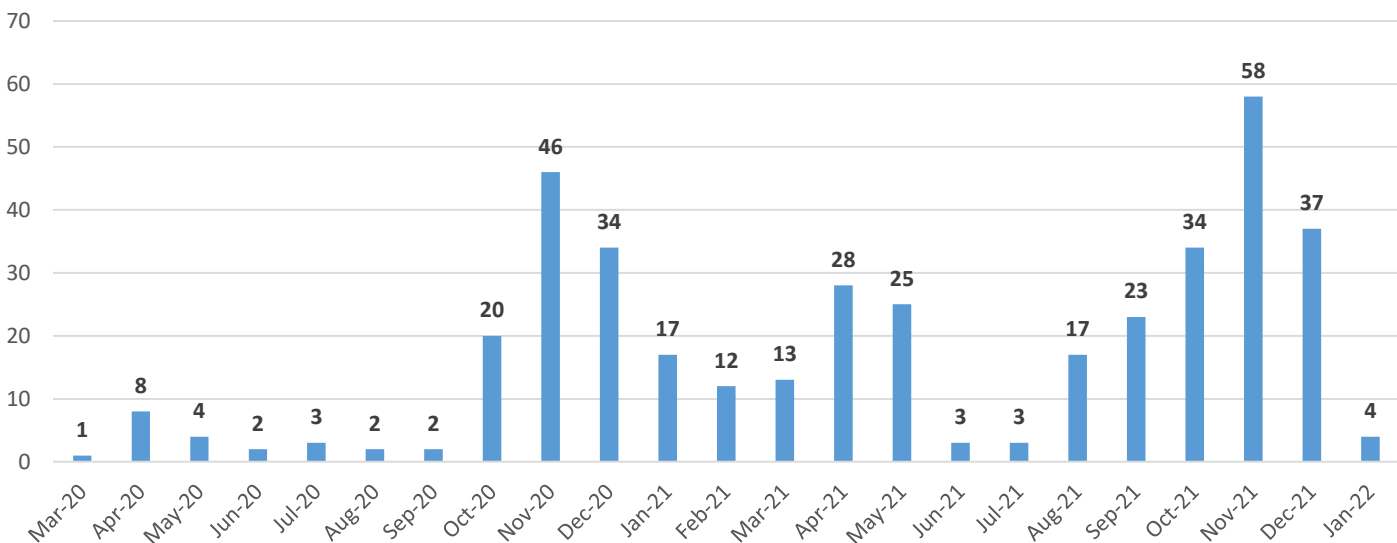
7-day Rate per 100k, Confirmed Cases



Barry County - Percentage of COVID-19 Cases by Age Group by Month



Hospitalizations by Month, Barry County



Barry County Deaths by Month

