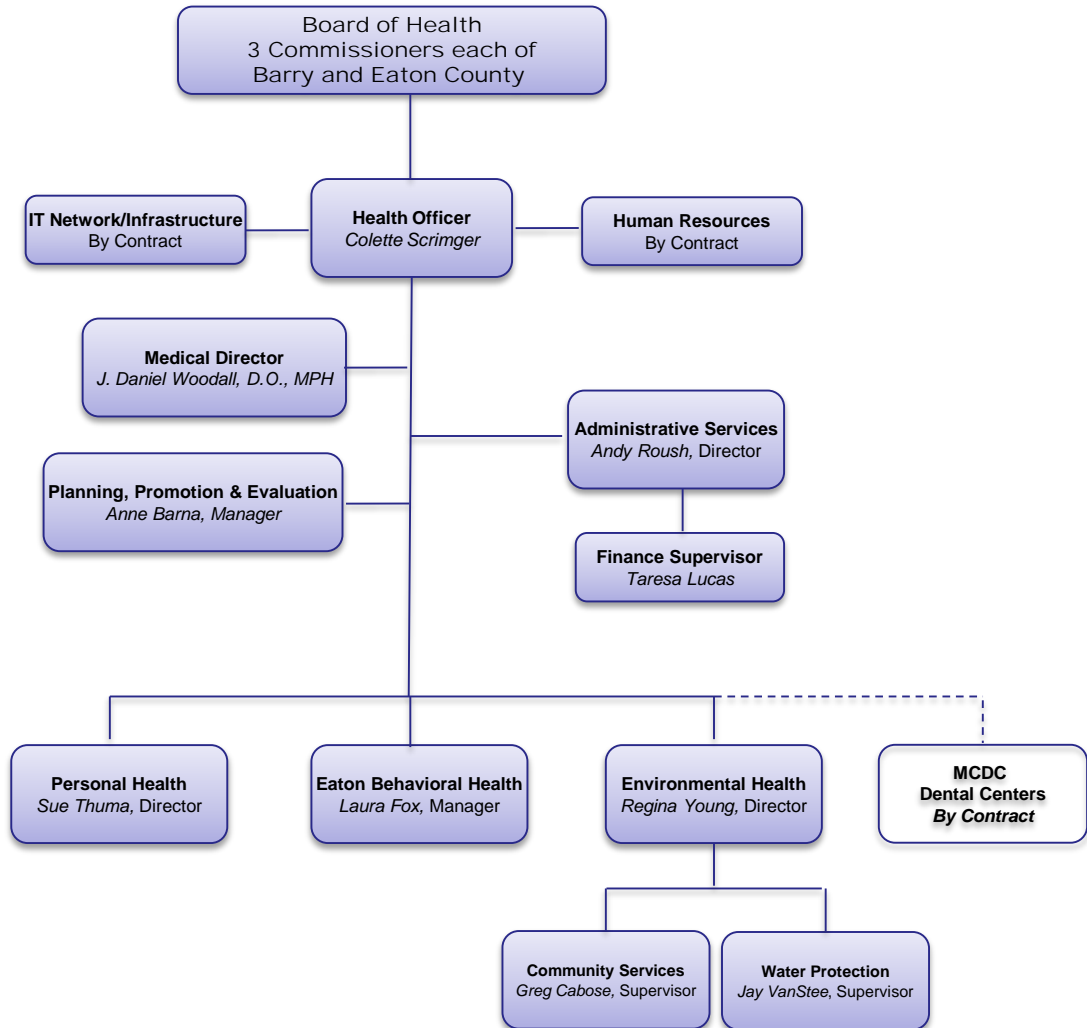




Barry-Eaton District Health Department

Be Active • Be Safe • Be Healthy



BARRY-EATON DISTRICT HEALTH DEPARTMENT ~ PROGRAMS & SERVICES AVAILABLE

ADMINISTRATION

Administration

- Division Supervision/Direction
- Contract/Grant Management
- Board of Health Coordination
- Elected Official Outreach
- Benefit Management
- Staff Recruitment/Orientation
- Labor Law Compliance
- Labor Relations/Contract Support
- Central File Management

Strategic Planning, Promotion, & Evaluation

- Coalition Support
- Communications Coordination
- Emergency Preparedness
- Health Assessment
- Health Education
- Health Policy Development
- Outreach
- Performance Management and Quality Improvement

Finance/Information Systems Management

- Budget Development/Monitoring
- General Accounting
- Financial Reporting
- Purchasing
- Payroll Control
- Billing
- Technology Services

My Community Dental Centers

- Contract with BEDHD to operate full service dental clinic for Medicaid & Uninsured.

PERSONAL HEALTH

- Breastfeeding Peer Mentor
- Children's Special Health Care
- Communicable Disease Surveillance and Control
- HIV Screening Services
- Immunizations
- Women, Infant, and Children (WIC) Program
- Lead Program
- Medicaid Outreach & Enrollment Services
- Sexually Transmitted Disease (STD) Testing, Surveillance and Control
- Vision & Hearing

ENVIRONMENTAL HEALTH

Water Protection Team

- Groundwater Quality Management
- Wastewater Management
- Land Development Planning
- Public Water Supply Coordination
- Private Water Supply Management
- Wellhead Protection
- Water/Sewer Assessment
- Surface Water Quality
- Public Health Nuisance Investigation
- Public Beach Monitoring

Community Services Team

- Indoor Air Quality Assessment
- Hazardous Materials Management
- Solid Waste Management
- Food Service Audits & Consultation
- Shelter/Recreational Facility Audits
- Vector Control Investigation
- Disease Outbreak Investigation
- Swimming Pool Audit & Consultation
- Environmental Health Education
- Medical Waste Monitoring
- Child Care, Foster Care, Children's Camp Inspections

EATON BEHAVIORAL HEALTH

- Screening, Assessment, Referral, and Follow-up (SARF)
- Community Change, Alternatives, Information, and Training (Prevention) (CAIT)
- Individual, Group, and Family Outpatient Counseling
- Intensive Outpatient Services
- Women's Specialty Services
- Driver's License Evaluations
- Eaton County Jail - Gender Specific Groups and Individual Counseling
- Medication Assisted Treatment (MAT)
- Case Management
- Integrated Substance Abuse and Mental Health Treatment